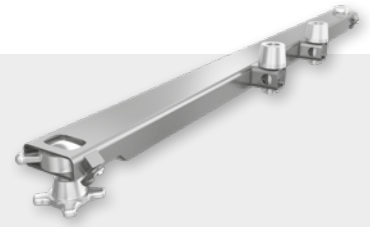


Bolsters



Flexibility, compatibility, stability and safety are the basic parameters for a future-oriented motor pool. JOST ensures that these parameters can be satisfied with its international quality standards and a global sales and after sales service network.

Bolsters with integrated twist locks connect containers to the carrier vehicle. The twist locks must always be used as set out in the instructions in the operating manual for the relevant vehicle. In Germany you must comply with the TÜV regulations and the Road Traffic Act StVZO, as well as the existing standards.

Load details for twist locks and bolsters

The basis for the load details is provided by static test bench tests that comply with the JOST testing standard.

The details for the maximum gross container weight only apply:

- For securing and transporting standard containers, such as freight containers that comply with ISO 1496, interchangeable containers that comply with EN 284 or EN 452 or directly comparable versions.
- If at least four twist locks of the same load group are used for each container.
- For almost uniform load distribution (load in the interchangeable container).
- For transport on metalled roads.

The details for the maximum gross container weight do not apply:

- To special applications, such as crane bodies, tipping containers, etc.

Product range of bolsters

rec. gross container weight* max.(kg)	Twist lock retractable	Integrated guide roller	Containerchassis	Intermodal vehicle / trailer	Locking pin diameter (mm)	Inner parts identical with type of twist lock	Weight (kg)	Order No.	Drawing No.	Figure see page ...
18.000		•		•	∅ 52	R 405 VAK	62.5	QT 160-80 V	410.150.000	72
				•	∅ 52	R 405 VAK	74.8	QT 160-80 RV	410.151.000	74
				•	∅ 38	R 406 VAK	61.1	QT 166-80 V	410.183.000	72
				•	∅ 38	R 406 VAK	73.4	QT 166-80 RV	410.168.000	74
				•	∅ 52	R 405 VAK	139.2	QT HV120-05	410.199.000	76
				•	∅ 52	R 405 VAK	140.7	QT HV150-05	410.203.000	76
				•	∅ 52	R 405 VAK	143.2	QT HV200-05	410.200.000	76
				•	∅ 52	R 405 VAK	122.0	QT HV200-80	410.222.000	77
				•	∅ 52	R 405 VAK V	76.2	QT 200 V	410.081.000	72
				•	∅ 52	R 405 VAK V	88.7	QT 200 RV	410.139.000	74
25.000		•	•	•	∅ 38	R 406 VAK-C	75,4	QT 206 V-C	410.185.000	76

Information for the vehicle construction:

* Depends on the centre to centre distance between the longitudinal supports

All bolsters are delivered unmounted.

All spare parts with item number 915.xxx.xxx are zinc-plated.

For replacement lock kit parts, see page 64.

For operating keys, see page 68.

Indications for mounting of the locking ring:

- For the installation of the locking ring an appropriate tool has to be used.
- Installation tool locking ring, please see page 69.
- The locking ring has principally to be replaced after dismantling the inner part of the twist lock.

